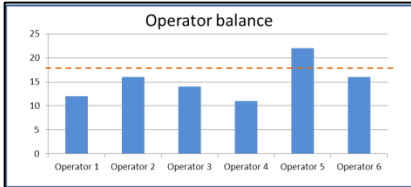


YOURFLOW®

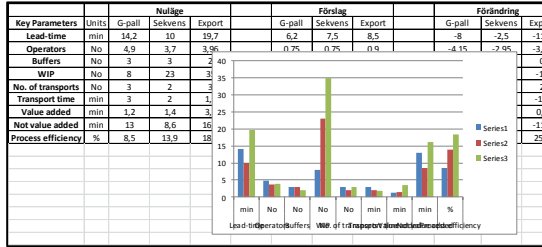
With YourFlow you can easily and quickly design cost effective production flows and the best way of working. YourFlow has better visualization and quantitative evaluation than traditional VSM (value stream mapping) and CAD-layouts. YourFlow gives support to solve difficult problems and therefore replaces other more complex tools. Simplicity promotes teamwork, i.e. everyone can participate and contribute in the improvement work. That approach always beats the “expert”.

Examples of functions:

Workload & operator/station balancing.



Extensive analysis possibilities by data export to Excel



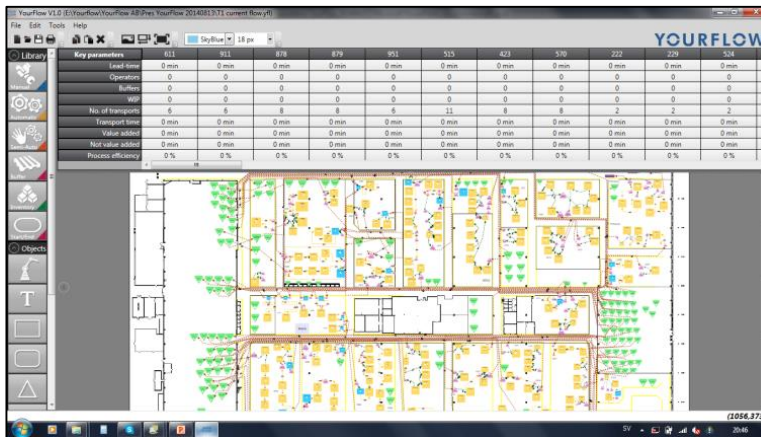
Bottleneck indication



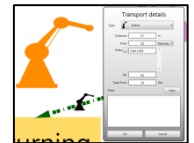
Quantitative results directly on screen:

- Lead time
- WIP
- Transport time
- No. of transports
- Operators
- Process efficiency
- Buffers
- Buffer waiting time
- Value added
- Not Value added
- Workload

Part/Product flow and work flow in same file.

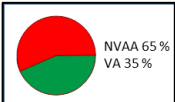


Set-scale function for automatic calculation of distance and strong layout support.



Robot workload analysis.

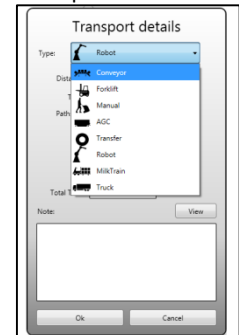
NVAA & VA analysis



Production costs for manual activities are automatically calculated



Transport type for improved material flow visualization

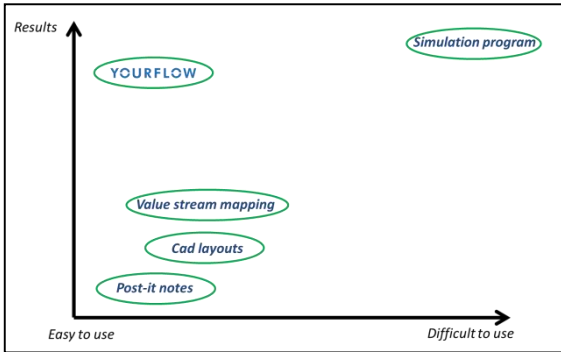


Path & flow analysis, total WIP calculation



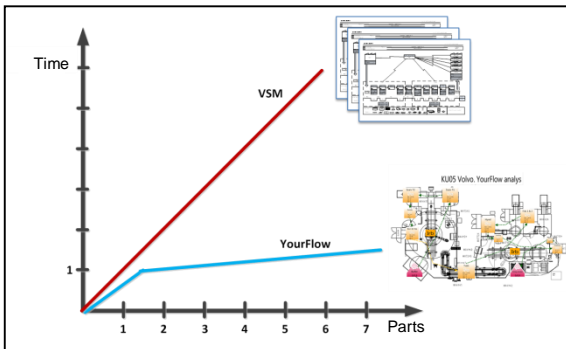
Get into the loop - YourFlow supports continuous improvements!

Customer values



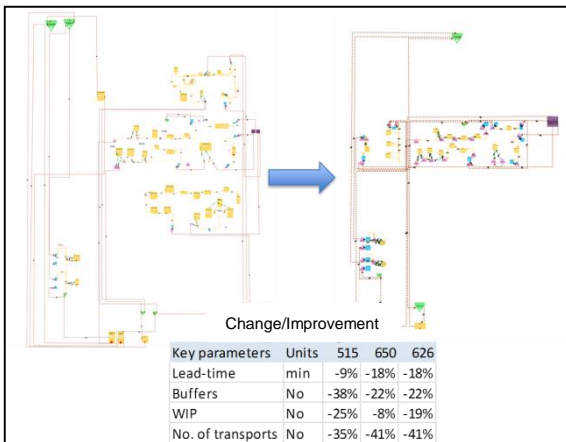
Easy to use

YourFlow is easy to use – user friendliness strengthens teamwork and gives better solutions and results. Teamwork always beats the single "expert". With these advantages YourFlow gives greater savings and the competence is kept in-house, which secure continuous improvements.



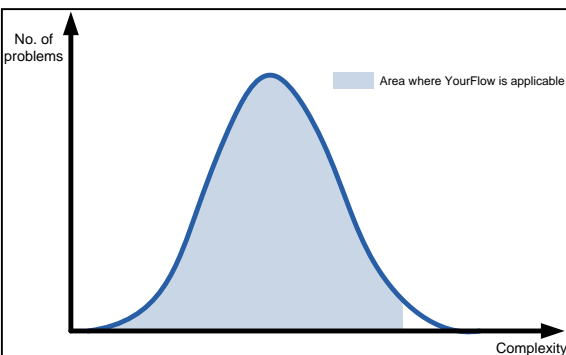
Time saving

YourFlow saves time. Because all parts and flows can be represented together with operator analysis (spaghetti/workload/NVAA etc.) in the same file. The drag & drop functionality and quick transport design features make it easy to create and modify solutions.



Data driven solutions

Quantitive evaluation and realistic visualization that really show part and product flows as well as layout and facility features. The possibilities are strengthened with import layout and hide/show layout. Twelve different numerical key-parameters are usually enough for evaluations and to reach the best solutions. Export to Excel gives extended analysis capabilities.



Right tool

Use the right tool and be more efficient and get better solutions. YourFlow is powerful enough for the most challenges.